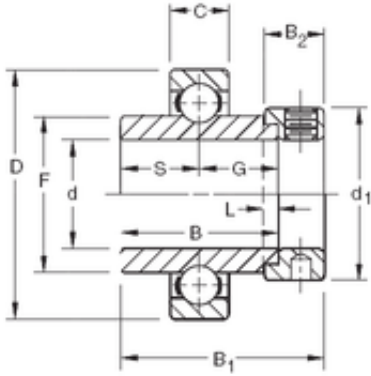




Timken MANUFACTURING (THAILAND)CO.,LTD.

25,4 mm x 52 mm x 34,93 mm Timken SM1100K deep groove ball bearings



Bearing No. SM1100K

Size	25.4x52x34.93 mm
Bore Diameter	25,4 mm
Outer Diameter	52 mm
Width	34,93 mm
d	25,4 mm
D	52 mm
B	34,93 mm
C	15 mm
d1	38,1 mm
B1	44,45 mm
B2	13,5 mm
F	33,83 mm
G	17,5 mm
L	4 mm
S	17,5 mm
Weight	0,217 Kg
Basic dynamic load rating (C)	15,6 kN

SM1100K Bearing 2D drawings and 3D CAD models